



WK610

## Unisex fleece bodywarmer with sherpa inner

- Warm, soft and comfortable inner.
- Versatile and functional garment, a workwear essential.
- Easy to decorate.

100% polyester. Bonded microfleece and sherpa fabric. Straight fit. 2 front zipped pockets with piping and zip puller. 1 zipped rounded chest pocket with zip puller on the right when worn, with matching double over stitching. Zip fastening with zip puller. Sherpa lining and hanging loop inside the neck. Cover stitch on armholes and bottom hem. Detachable brand label.



XS - S - M - L - XL - XXL - 3XL - 4XL - 5XL



500 g/m<sup>2</sup>



### More information

#### Logistic



1



10

#### Country of origin



BD - Bangladesh

#### Customs code



61103099



Black

Chocolate

Navy

#### Washing instructions

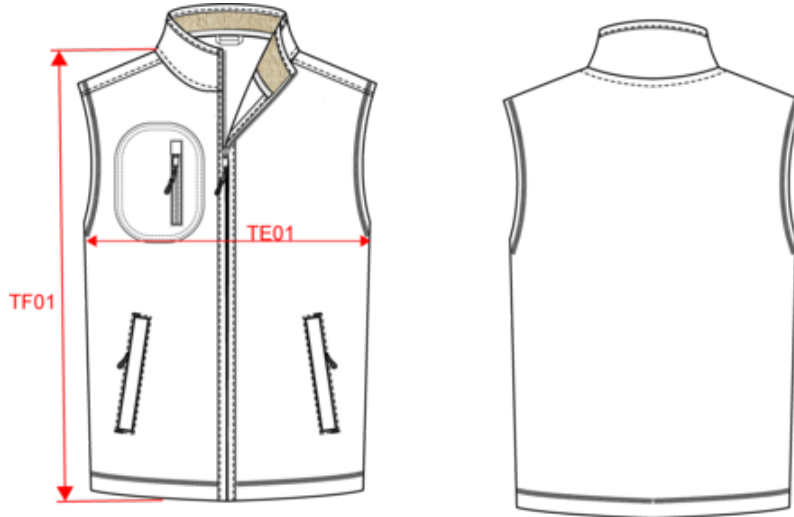




WK610

## Unisex fleece bodywarmer with sherpa inner

### Dimensions (cm)



Measurements in cm	XS	S	M	L	XL	XXL	3XL	4XL	5XL
TE01 - 1/2 chest width at 1.5cm below armhole	51.00	54.00	57.00	60.00	63.00	66.00	69.00	72.00	75.00
TF01 - Total height from HSP	68.00	70.00	72.00	74.00	76.00	78.00	80.00	82.00	84.00



WK610

## Unisex fleece bodywarmer with sherpa inner

### Colours information



**Black**  
RVB : 35,35,37  
Pantone C : Black  
Pantone TCX : 19-4004TCX



**Chocolate**  
RVB : 63,52,49  
Pantone C : 412C  
Pantone TCX : 19-0910TCX



**Navy**  
RVB : 41,46,56  
Pantone C : 433C  
Pantone TCX : 19-4012TCX

Logistic



1



10

Sizes	Width (cm)	Height (cm)	Length (cm)	Net weight (kg)	Gross weight (kg)	Pieces/Box	Pieces/Bundle
XS	40.00	28.00	60.00	5.00000	6.60000	10	1
S	40.00	28.00	60.00	5.40000	7.00000	10	1
M	40.00	28.00	60.00	5.70000	7.30000	10	1
L	40.00	30.00	60.00	6.10000	7.80000	10	1
XL	40.00	30.00	60.00	6.40000	8.10000	10	1
XXL	40.00	30.00	60.00	6.70000	8.40000	10	1
3XL	40.00	36.00	60.00	6.90000	8.80000	10	1
4XL	40.00	36.00	60.00	7.60000	9.50000	10	1
5XL	40.00	36.00	60.00	8.00000	9.90000	10	1